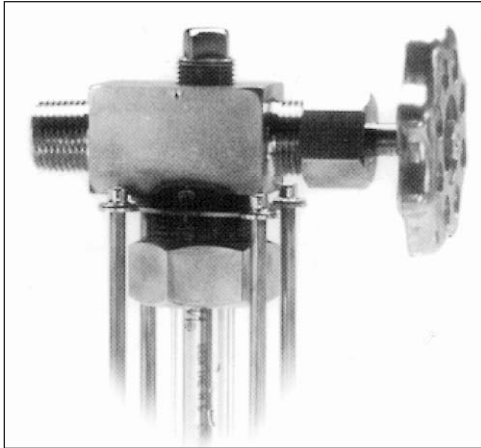


BOILER TRIM GAUGE COCKS



NEW MODEL 125 TUBULAR VALVE

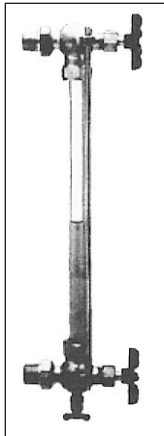
Jerguson's Model 125 is a new low cost tubular valve designed for non-critical applications and is available with carbon steel or 316 stainless steel bodies, fabricated from bar stock. Vessel connections are rigid. **Types of tubes for use with the Model 125 Valve include:**

1. High Pressure Borosilicate-A Heavy Wall Glass Tubes
2. Red-Lin Pyrex
3. Polycarbonate-Durable Plastic Tubes
4. Kel-F Chemical Resistant Plastic Tubes

Both the Polycarbonate-Durable and Kel-F Chemical Resistant Plastic Tubes are alternatives to glass for safety and durability.

Jerguson recommends that tubular gauges be specified only in safe, low pressure (below 200 PSIG/1378 KPaG) applications.

ITEM#	DESCRIPTION
JER125SS1/2	316 1/2" NPT stainless steel
JER125SS3/4	316 3/4" NPT stainless steel

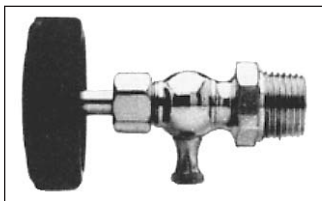


DIRECT READING LIQUID LEVEL WATER GAUGES

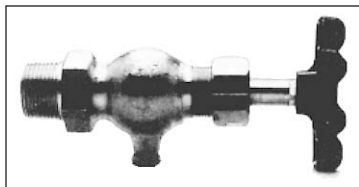
Models 000, 1 and 1 1/2 Self-Cleaning Water Gauge

Forged body, metal wheels. Tested for pressures up to 200 pounds. Two guards.

ITEM#	DESCRIPTION	PIPE THREAD
WGA00038	Brass - forged body #000	3/8" NPT
WGA112	Brass - forged body #1	12" NPT
WGA112BC	Comes with ball chks. brass - forged body #1	1/2" NPT
WGA134	Brass - forged body #1	3/4" NPT



Model 25



Model 25

GAUGE COCKS

ITEM#	DESCRIPTION	PIPE THREAD
GCO2512	Compression gauge cocks - machine finish, Bakelite handle #25	1/2" NPT
GCO2712	Forged body, teflon seat, aluminum #27	1/2" NPT